



**A.REPONEN OY**

# A. REPONEN OY

A. REPONEN OY, LOCATED IN JOUTSA AND STARTED OPERATIONS IN 1978, IS AN EXPERT IN METAL AND STEEL STRUCTURES. WE OFFER VERSATILE AND CUSTOMER-ORIENTED SERVICE. WE HAVE DECADES OF EXPERIENCE IN DESIGNING, MANUFACTURING AND SURFACE FINISHING DIFFERENT METAL AND STEEL STRUCTURES. THE SOLID EXPERIENCE COMBINED WITH STATE-OF-THE-ART TECHNOLOGY ENSURES THE BEST POSSIBLE RESULTS QUICKLY AND COST-EFFECTIVELY.



# OUR PRODUCTION FACILITIES

## **PRODUCTION SPACE (1)**

**3500 SQUARE METERS**

**DOOR SIZE 8.0 X 6.0**

**BRIDGE CRANES**

**2 PCS 10,000 KG**

**3 PCS 6300 KG**

**FREE HEIGHT UNDER THE CRANE 9000**

## **PRODUCTION SPACE (2)**

**2126 SQUARE METERS**

**DOOR SIZE 4.0 X 4.2**

**BRIDGE CRANE:**

**1 PC 5000 KG**

**FREE HEIGHT UNDER THE CRANE 4500**





# SERVICES

- CONTRACT MANUFACTURING
- PRE-ASSEMBLIES
- CONTAINER STRUCTURES
- PROJECT DELIVERIES
- TUBE LASER
- BENDING
- WELDING
- SURFACE TREATMENTS





# CONTRACT MANUFACTURING

CONTRACT MANUFACTURING INCLUDES PIPE LASERS, PIPE AND PROFILE BENDING, SHEET METAL MODIFICATIONS, WELDING WORK, ASSEMBLY AND INSTALLATION WORK. WHETHER WE'RE TALKING ABOUT A SINGLE PIECE OR A LARGE SERIES, WE WANT TO OFFER COST-EFFECTIVE AND HIGH-END SOLUTIONS WITH SECURITY OF SUPPLY. OUR STATE-OF-THE-ART EQUIPMENT BASE COMBINED WITH EXTENSIVE KNOW-HOW ENABLES UNIQUE SOLUTIONS IN A CUSTOMER-ORIENTED WAY.





# PRE-ASSEMBLIES

PREASSEMBLY WORK IS ALWAYS CARRIED OUT ACCORDING TO THE CUSTOMER'S PLANS AND DRAWINGS. THE ASSEMBLY IS CARRIED OUT EITHER FROM THE COMPONENTS AND MATERIALS SUPPLIED BY THE CUSTOMER OR WE CARRY OUT ALL THE PROCUREMENTS RELATED TO THE DELIVERY. We ASSEMBLE EQUIPMENT INTO COMPLETE PACKAGES INCLUDING MECHANICAL INSTALLATION, HYDRAULIC AND PNEUMATIC PIPING AND ELECTRIFICATION





# PRE-ASSEMBLIES

OUR SERVICES INCLUDE:

EQUIPMENT AND INSTALLATION OF RESERVE  
POWER CONTAINERS, PIPELINES, ELECTRICAL  
EQUIPMENT





# CONTAINER MANUFACTURING

WE ARE THE MANUFACTURING OF HIGH-QUALITY AND DURABLE CONTAINERS AND A SOLUTION SUPPLIER FOR EQUIPMENT SPACES – PLEASE TELL US YOUR NEEDS AND WE WILL ALWAYS IMPLEMENT THE BEST SOLUTIONS BASED ON THEM. THE DESIGN, IMPLEMENTATION AND INSTALLATION OF EQUIPMENT ARE ALWAYS CARRIED OUT ON A TURNKEY BASIS.

WE ALWAYS DESIGN EQUIPMENT SPACE SIZING, STRUCTURES AND INSTALLATIONS TO MEET THE SPECIFIC REQUIREMENTS OF THE CUSTOMER AND THE OBJECT. WE ALSO SUPPLY EQUIPMENT SPACES WITH P1 AND P2 FIRE CLASSIFICATION. WE DESIGN AND IMPLEMENT FIRE-RATED EQUIPMENT FACILITIES TO MEET CUSTOMERS' NEEDS.





# PROJECT DELIVERIES

**WE OFFER OUR CUSTOMERS CUSTOMER-ORIENTED PROJECT DELIVERIES ACCORDING TO INDIVIDUAL NEEDS AND WISHES. OUR PRODUCTION FACILITIES ARE LOCATED IN JOUTSA, BUT OUR SERVICES AND PRODUCTS CAN BE UTILIZED FULLY NATIONWIDE – AND, IF NECESSARY, ALSO BEYOND OUR COUNTRY'S BORDERS**





# PIPE LASER

WE OFFER PIPE LASER CUTTING FOR MACHINE AND EQUIPMENT MANUFACTURERS AND THE ENGINEERING INDUSTRY.

WITH THE 3D TUBE LASER CUTTING SYSTEM, WE OFFER OUR CUSTOMERS A COMPLETELY UNIQUE SERVICE PACKAGE. OUR MACHINE BASE ENABLES THE HANDLING OF HIGH-QUALITY PIPES, PROFILES AND BEAMS — THE TUBE LASER IS ABLE TO CUT AND BEND VERY RIGID PIPES AND PROFILES.

ACCORDING TO THE REQUIREMENTS OF OUR CUTTING SERVICE EN1090-2:2009+A1:2011 IN IMPLEMENTATION CLASSES EXC1, EXC2, EXC3 AND EXC4.





# PIPE LASER

- 14M LONG CHARGING
- 14M LONG DEMOLITION
- THE FOLLOWING PROFILE SIZES:
- ROUND D40 -> D406
- SQUARE 40x40 -- 300x300
- RECTANGULAR 60x40 -> 400x200
- HEA 100 -- 280
- HEB 100 -- 280
- IPE 80 -- 360
- IPN 80 -- 360
- UPN 65 -- 380
- L 40x40 -- 200x200
- MATERIALS: FE, AL, RST, HST





# BENDING

WE BEND THE STEEL TUBES ACCORDING TO THE DIMENSIONS DESIRED BY THE CUSTOMER. THE VERSATILE EQUIPMENT AT OUR DISPOSAL ENABLES CUTTING AND BENDING OF VARIOUS STEEL TUBES. WE PROVIDE PIPING TO SUIT YOUR NEEDS FOR THE MOST DEMANDING APPLICATIONS. IN ADDITION, WE CARRY OUT DIFFERENT ASSEMBLY WORK AS PART OF THE PRODUCTION PROCESS IF YOU WISH.

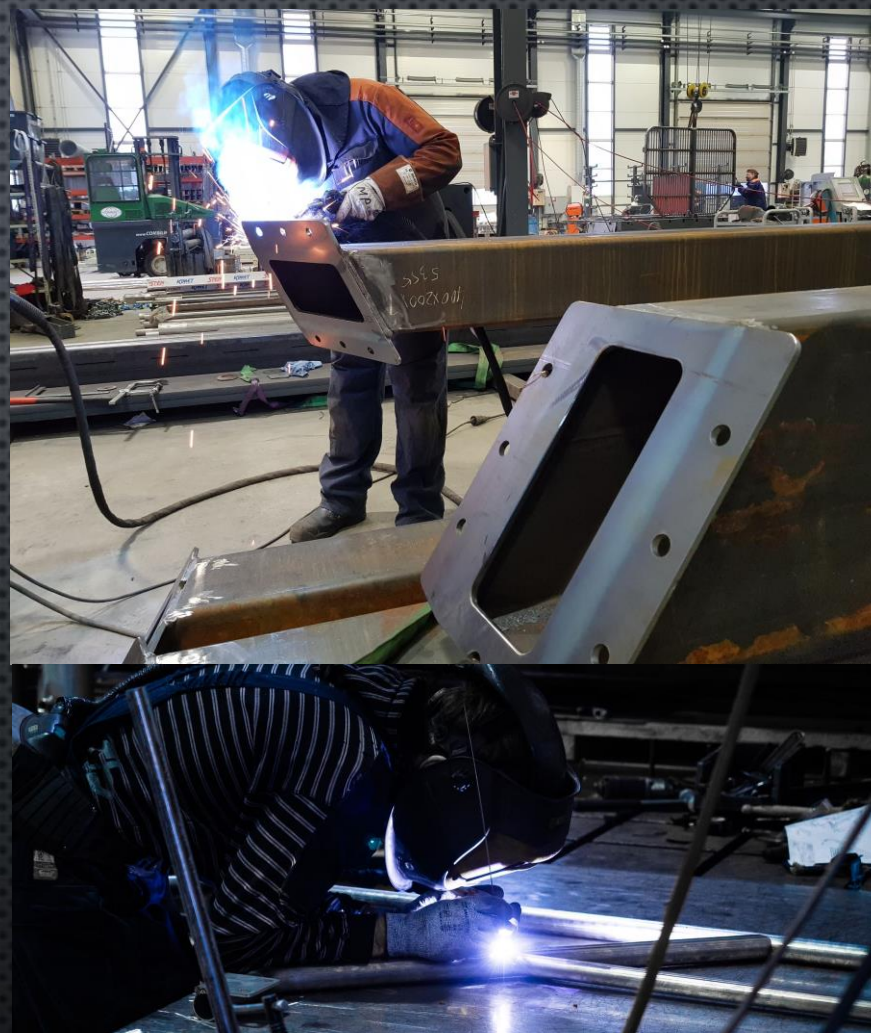




# WELDING

WE WELD ALL KINDS OF PRODUCTS FROM SIDE TO SIDE. FOR EXAMPLE, DURABLE AND HIGH-QUALITY METAL AND STEEL STRUCTURES AND OTHER WELDING ASSEMBLIES ARE MANUFACTURED IN OUR WORKSHOP. ALL OUR PRODUCTS ARE CUSTOMIZABLE AND AVAILABLE IN THE FORM OF THE CUSTOMER'S PREFERRED FORM.

THE WELDING SYSTEM (ISO 3834-3) IS USED TO ENSURE HIGH QUALITY. DO WELDING WITH AN EXPERIENCED PROFESSIONAL AND TELL US HOW WE CAN SERVE. MANUFACTURE OF STEEL STRUCTURE ASSEMBLIES AND PRODUCT SYSTEMS IN IMPLEMENTATION CLASSES EXC1, EXC2, EXC3 AND EXC4





# WELDING

## MIG WELDING

MIG WELDING IS A GAS WELDING METHOD WITH ADVANTAGES OF SPEED AND WELD CLEANLINESS. WE HAVE WELDING EQUIPMENT AT OUR DISPOSAL IS VALIDATED.

## MAG WELDING

MAG WELDING IS CARRIED OUT ON THE SAME PRINCIPLES AND EQUIPMENT AS MIG WELDING.

## TIG WELDING

TIG WELDING IS A GAS ARC WELDING PROCESS WITH ADVANTAGES SUCH AS GOOD MELT AND PENETRATION CONTROL, PRECISELY CONTROLLED HEAT INPUT AND WELD PURITY.

## SPOT WELDING

SPOT WELDING IS A RESISTANCE WELDING METHOD IN WHICH THE JOINTS OF THE JOINTS ARE HEATED BY ELECTRIC CURRENT TO A FAST-PACED, ALMOST MOLTEN SPACE.

## MMA WELDING AND REPAIR WELDING

MMA WELDING IS AN ARC WELDING PROCESS THAT ALSO WORKS IN DIFFICULT CONDITIONS AND IS EXTREMELY RESISTANT TO WIND AND WATER.

FE, STAINLESS STEEL/HST, AL, CAST IRONS





# SURFACE TREATMENTS

OUR COMPANY PERFORMS SANDBLASTING AND WET PAINTING ON THE PRODUCTS WE SUPPLY AND FOR CONTRACT READINESS. WITH 2-COMPONENT WET PAINTING, COMPRISING ZINC, EPOXY AND POLYURETHANE PAINTINGS, WE HANDLE STEEL SURFACES FOR DEMANDING CONDITIONS.

DOCUMENTATION OF THE PAINTING PROCESS, E.G. CONDITION AND FILM THICKNESS MEASUREMENTS, FINAL INSPECTION REPORTS ARE AN ESSENTIAL PART OF CUSTOMER CO-OPERATION. WE HAVE FACTORY PRODUCTION CONTROL (FPC) THAT INCLUDES OUR SURFACE TREATMENT.





# REFERENCES

 **WIHURI**

 **KESLA**

**Outotec**

**MACHINERY**

  
**MERUS POWER**

 **avesco**

**CAT**

 **TEHOMET**  
A **valmont** COMPANY

**AVANT**<sup>®</sup>

**wavin**  
**Labko**

 **Okpa unicon**

TEOLLISUUSPUTKISTOT  
**PrePipe**



# CERTIFICATES

DEKRA Industrial Oy  
Tuupakankuja 1, 01740 Vantaa

**SERTIFIKAATTI**  
EN ISO 3834-2  
No.: S048-185

DEKRA Industrial Oy on myöntänyt tämän sertifikaatin yritykselle

**A. Reponen Oy**  
Köysitie 6; 19650 Joutsa

valmistuspaikkana  
**A. Reponen Oy**  
Köysitie 6; 19650 Joutsa

todistuksena, että yrityksen laatujärjestelmä täyttää alla mainitun standardin vaatimukset

**EN ISO 3834-2: 2005**  
METALLIEN SULAHITSAUKSEN LAATUVAATIMUKSET  
OSA 2: KATTAVAT LAATUVAATIMUKSET

Sertifikaatti on myönnetty 1.3.2018 ja on voimassa 28.2.2021 asti, edellyttäen, että organisaation laatujärjestelmä täyttää jatkuvasti yllä mainitun standardin vaatimukset. Liitteessä, joka on olennainen osa tätä todistusta, on esitetty lisäehtoja todistuksen voimaassaololle.

  
Vantaa 1.3.2018  
Matti Andersson, toimitusjohtaja

DEKRA Industrial Oy • Tuupakankuja 1, 01740 Vantaa • [www.dekra.fi](http://www.dekra.fi)

**FINAS**  
Finnish Accreditation Service  
S048 (EN ISO/IEC 17065)

ILMOITETTU LAITOS N:o 2656  
DEKRA Industrial Oy  
Tuupakankuja 1, 01740 Vantaa

**TUOTANNON SISÄISEN LAADUNVALVONNAN  
VAATIMUSTENMUKAISUUSTODISTUS**  
N:o 2656-CPR-FIN091/2

Euroopan parlamentin ja neuvoston asetuksen (EU) n:o 305/2011, annettu 9 päivänä maaliskuuta 2011 (rakennustuoteasetus tai CPR) mukaisesti, tämä todistus koskee rakennustuotetta;

**hitsatut rakenteelliset teräskokoonpanot ja tuotejärjestelmät.**

Teräskokoonpanojen ja tuotejärjestelmien valmistus toteutusluokissa  
EXC1, EXC2, EXC3, EXC4  
EN 1090-2:2018 vaatimusten mukaisesti.  
Ominaisuuksien ilmoittaminen: ZA.3.4 (Menetelmä 3a).

valmistaja:  
**A. Reponen Oy**  
Köysitie 6; 19650 Joutsa

valmistuspaikka:  
**A. Reponen Oy**  
Köysitie 6; 19650 Joutsa

Tällä todistuksella vahvistetaan, että kaikki suoritustason pysyvyyden arvioinnin ja varmentamiseen liittyvät ehdot, jotka on esitetty standardin,

**EN 1090-1:2009+A1:2011**

liitteessä ZA on täytetty järjestelmän 2+ mukaisesti ja että

**tuotannon sisäinen laadunvalvonta**  
täyttää kaikki yllä määritellyt vaatimukset

Tämä todistus on myönnetty ensimmäisen kerran 10.1.2017, sisältöä muutettu 1.3.2018 sekä 8.10.2019 ja on voimassa niin kauan kuin ilmoitettujen ominaisuuksien suoritustason arvioinnissa käytetyn yhdenmukaistetun standardin sisältämät testimenetelmät ja/tai tuotannon sisäisen laadunvalvonnan vaatimukset eivät muutu ja tuotetta ja tuotantolaitoksen valmistusolosuhteita ei oleellisesti muuteta, ellei tuotannon sisäisestä laadunvalvonnan sertifiointista vastaava laitos peruuta todistusta tai muuta sen laajuutta. Liitteessä, joka on olennainen osa tätä todistusta, on esitetty lisäehtoja todistuksen voimaassaololle.

Vantaa, 8.10.2019

  
Matti Andersson, Toimitusjohtaja

DEKRA Industrial Oy • Tuupakankuja 1, 01740 Vantaa • [www.dekra.fi](http://www.dekra.fi)





# THANK YOU , QUESTIONS